

ROSE PRECISION

SPHERICAL BEARINGS

ROD ENDS

ground track



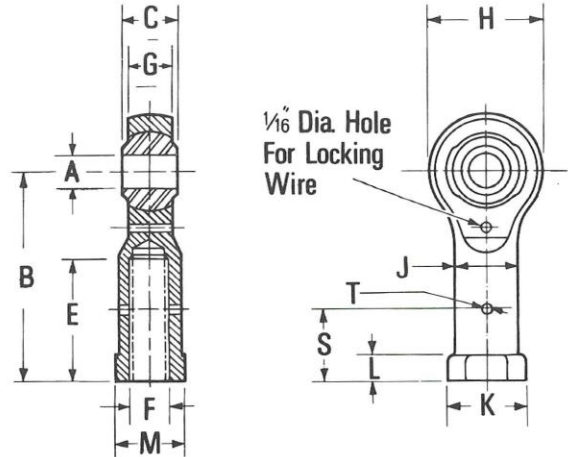
SPECIFICATION

HOUSING S94, S95, OR S96 STEEL.

FINISH CADMIUM PLATED EXCEPT ON BEARING SURFACE TO SPECIFICATION DTD 904C.

BALL ONE PER CENT CARBON CHROMIUM STEEL (EN31 OR EQUIVALENT) HEAT TREATED TO 60/62 ROCKWELL 'C'.

ALL DIMENSIONS GIVEN IN INCHES.



RBJ 300 aircraft series female thread

BEARING NUMBER	A.G.S. REF. No.	A	B	C	E	F		G	H	J	K	L	M	S	T	Ball Diameter	Max. Static Load in Pounds Approx.	Weight in Pounds Approx.	
		Bore	Centre Length	Ball Width	Thread Length	CLASS 2B Diameter	T.P.I.	Hd.	Housing Width	Head Diameter									
		See Below	+020 -020	+000 -005	+050 -000														
RBJ 371	AGS 3050	.1120	.937	.218	.437	No. 6 UNC.	32	RH	.156	.437	.230	.300	.100	.250	.250	.062	.312	520	.013
RBJ 372	AGS 3051	.1120	.937	.218	.437	.138		LH	.156	.437	.230	.300	.100	.250	.250	.062	.312	520	.013
RBJ 373	AGS 3052	.1380	1.000	.240	.500	No. 8 UNC.	32	RH	.187	.500	.280	.360	.125	.312	.290	.062	.343	830	.020
RBJ 374	AGS 3053	.1380	1.000	.240	.500	.164		LH	.187	.500	.280	.360	.125	.312	.290	.062	.343	830	.020
RBJ 375	AGS 3054	.1640	1.187	.275	.625	No. 10 UNF.	32	RH	.218	.625	.320	.400	.125	.343	.330	.062	.406	1,210	.033
RBJ 376	AGS 3055	.1640	1.187	.275	.625	.190		LH	.218	.625	.320	.400	.125	.343	.330	.062	.406	1,210	.033
RBJ 377	AGS 3056	.1900	1.437	.343	.750	1/2 UNF.	28	RH	.260	.750	.410	.500	.187	.437	.420	.062	.500	2,250	.061
RBJ 378	AGS 3057	.1900	1.437	.343	.750			LH	.260	.750	.410	.500	.187	.437	.420	.062	.500	2,250	.061
RBJ 379	AGS 3058	.2500	1.687	.406	.937	5/16 UNF.	24	RH	.320	.875	.470	.580	.187	.500	.530	.093	.625	3,600	.094
RBJ 380	AGS 3059	.2500	1.687	.406	.937			LH	.320	.875	.470	.580	.187	.500	.530	.093	.625	3,600	.094
RBJ 381	AGS 3060	.3125	1.937	.468	1.125	3/8 UNF.	24	RH	.380	1.000	.660	.800	.250	.687	.620	.093	.720	5,540	.184
RBJ 382	AGS 3061	.3125	1.937	.468	1.125			LH	.380	1.000	.660	.800	.250	.687	.620	.093	.720	5,540	.184
RBJ 383	AGS 3062	.3750	2.562	.625	1.500	1/2 UNF.	20	RH	.510	1.250	.840	1.000	.312	.875	.830	.125	.937	10,150	.386
RBJ 384	AGS 3063	.3750	2.562	.625	1.500			LH	.510	1.250	.840	1.000	.312	.875	.830	.125	.937	10,150	.386
RBJ 385	AGS 3064	.5000	3.125	.843	1.875	5/8 UNF.	18	RH	.640	1.687	1.030	1.218	.375	1.062	1.000	.125	1.250	16,400	.775
RBJ 386	AGS 3065	.5000	3.125	.843	1.875			LH	.640	1.687	1.030	1.218	.375	1.062	1.000	.125	1.250	16,400	.775
RBJ 387	AGS 3066	.6250	3.687	.937	2.250	3/4 UNF.	16	RH	.760	2.000	1.220	1.437	.437	1.250	1.200	.125	1.437	23,900	1.330
RBJ 388	AGS 3067	.6250	3.687	.937	2.250			LH	.760	2.000	1.220	1.437	.437	1.250	1.200	.125	1.437	23,900	1.330
RBJ 389	AGS 3068	.7500	4.250	1.000	2.750	7/8 UNF.	14	RH	.812	2.187	1.410	1.650	.500	1.437	1.375	.125	1.500	32,800	1.746
RBJ 390	AGS 3069	.7500	4.250	1.000	2.750			LH	.812	2.187	1.410	1.650	.500	1.437	1.375	.125	1.500	32,800	1.746

LIMITS

Bore of ball "A" :

AGS 3050 to AGS 3065 ± .00025"
 AGS 3066 to AGS 3069 + .0005"
 - .00025"

Diametral clearance :

AGS 3050-61 ball free but diametral clearance not to exceed .0004"
 AGS 3066-69 ball free but diametral clearance not to exceed .0008"

For further information refer to Technical index.